

The South West Peatland Partnership

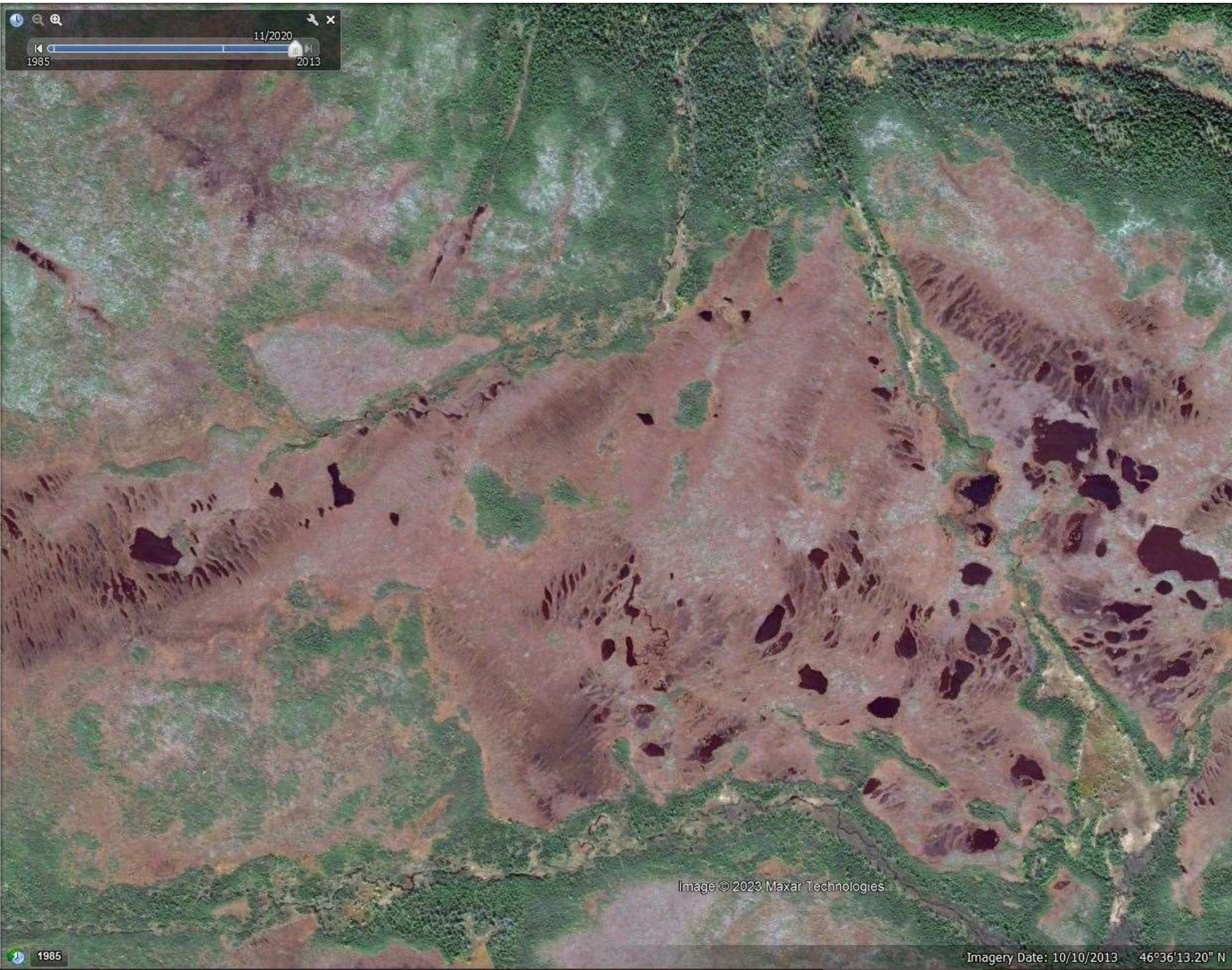


South West
Peatland
Partnership



Partner Organisations





Cape Breton Highlands,
Nova Scotia

Intact oceanic blanket bog.



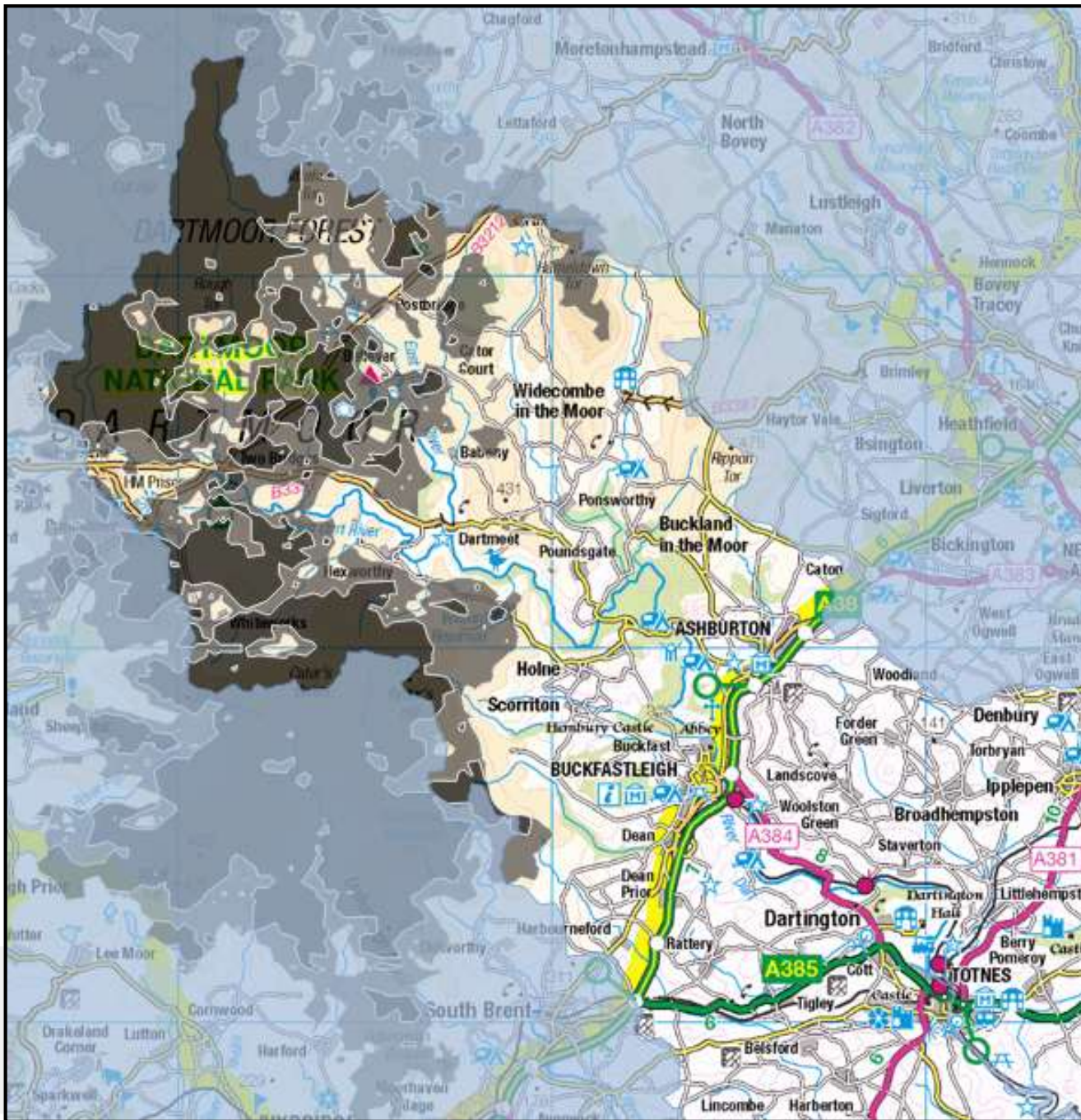
South West
Peatland
Partnership

Dartmoor, Tavy Head

Burning, peat cutting, military use, agriculture.



South West
Peatland
Partnership



The Dart

A short catchment, much of it on peat.

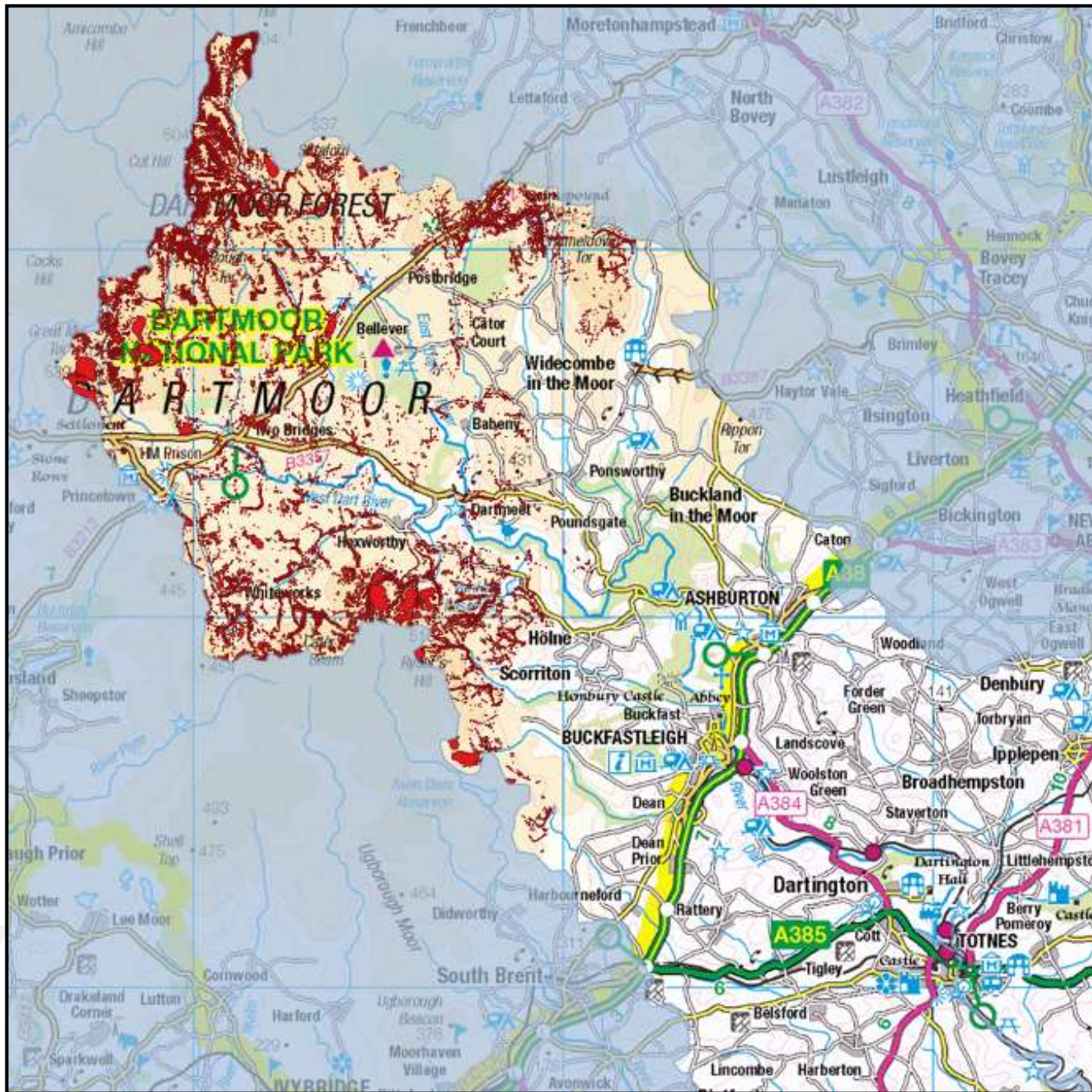
5542ha deep peat

5618ha shallow peat

Extensive areas of blanket bog on north and south moor, lots of valley mires, esp. on Cherry Brook.



**South West
Peatland
Partnership**



The Dart

Relatively severe damage throughout

Gulleying – multiple drivers esp. tinworking and bombs!

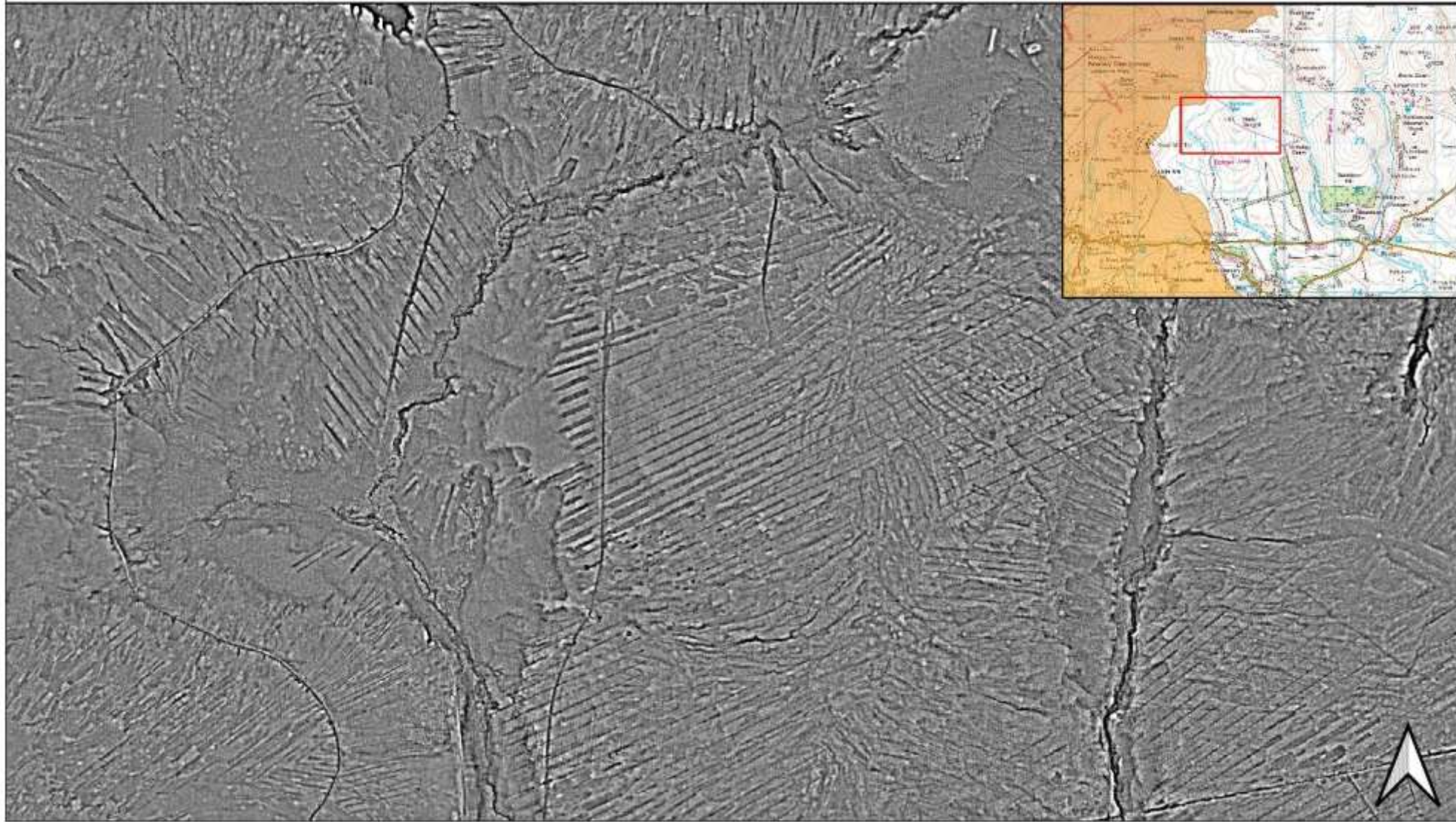
Extensive cutting – domestic but also intensive industrial.



South West
Peatland
Partnership

South West Peatland Partnership

Example Damage - Blackabrook Head Peat Works, worked until 1879



South West Peatland Partnership
Okehampton Business Centre
Higher Stockley Mead
Okehampton
Devon, EX20 1FJ

Compiled By: C Barrowclough
On: 27.10.2024



Damage to SW peats - Dartmoor

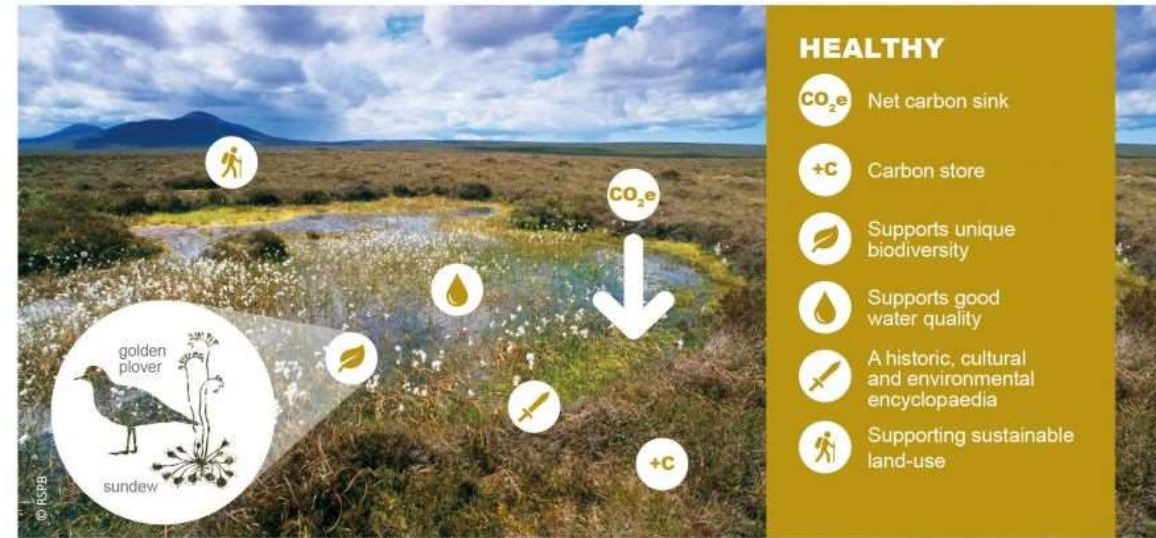


South West
Peatland
Partnership

Why does this matter?

- **Huge stores of carbon** - > x2 the carbon stored in all the world's forests (IUCN).
- Water – **Quantity** – a bog that holds water well is a reservoir on a hill in times of drought. Degree of flood mitigation also.
- Water – **Quality** – damaged bogs shed **DOC** and other nasties into supply (Manganese).
- **pH** – strong association between most damaged areas and river pH crashes, both on Dartmoor and elsewhere.
- **pH** – a general understanding that functional wetlands downslope incl. fens and wet woodland = stable river pH
- Biodiversity – Lots of unusual and declining spp.
- Hugely enjoyed and 'loved' landscapes, damage compromises enjoyment.
- Unusually valuable from historic environment standpoint, and peatland decline undoes this protection.

ECOSYSTEM SERVICES IN A HEALTHY PEATLAND



IMPACT ON ECOSYSTEM SERVICES IN A DAMAGED PEATLAND



South West
Peatland
Partnership

What does peatland restoration mean?

Bringing the water table back up – blocking up gulleys and drains and rewetting drying peat.



South West
Peatland
Partnership

Hangingstone Hill during the Summer '22 drought



UNRESTORED

RESTORED

A job to be done at scale – currently averaging 13,000 to 15,000 dams per winter season.

This site – Tavy head (240ha), finished two weeks ago with 18,642 dams on site. 14 months on site with 3 contractors running up to nine excavators between them.



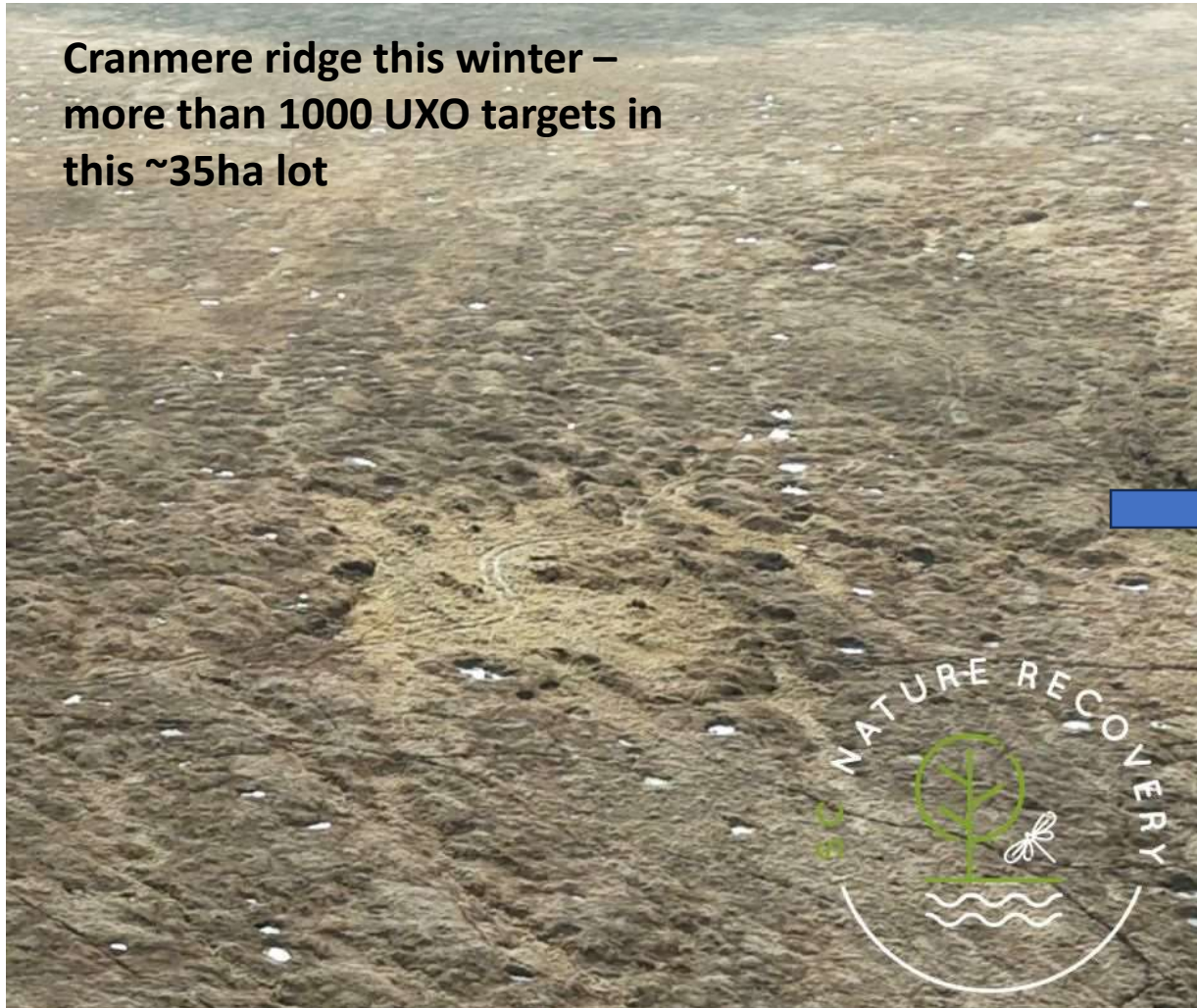
Site hut

Cut hill

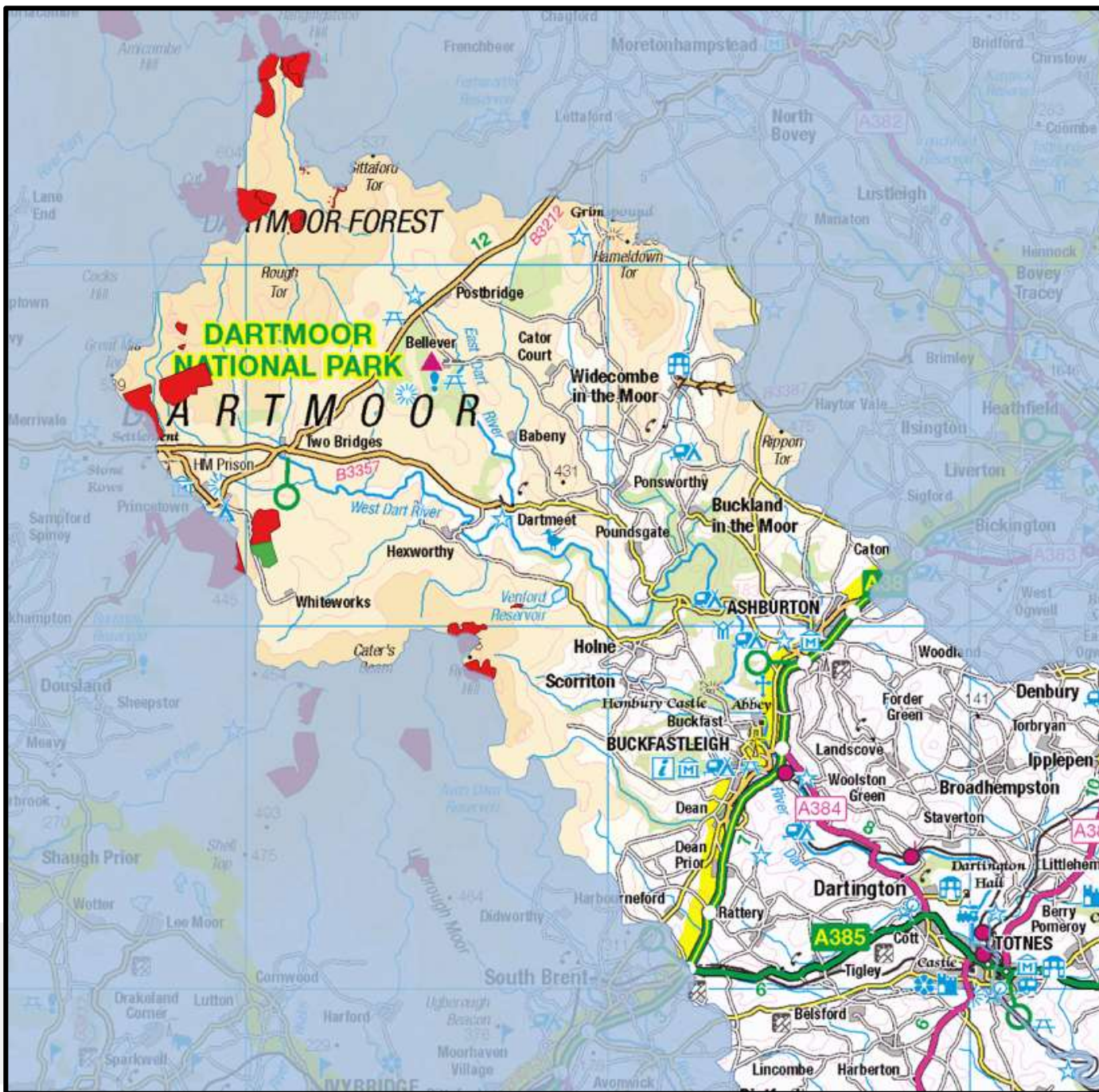


South West
Peatland
Partnership

**Cranmere ridge this winter –
more than 1000 UXO targets in
this ~35ha lot**



**South West
Peatland
Partnership**



Dart work to date (RED) and works forthcoming (GREEN 😊).

Dart is NOT a priority for peatland restoration currently. Only due to the fact Water Company has been steered to address WQ issues on their moorland abstraction catchments – Avon, Meldon, Venford, Tavy. (WINEP via EA)

HOWEVER – SWW generally supports work outside of these catchments if we can secure funding.

Cap in hand.....

Groundworks ~ @£5.5K/ha + UXO @ £2k/ha + materials.

= 100ha @ £500,000 - £800,000



South West
Peatland
Partnership

Thank you



southwestpeatlandpartnership.co.uk



South West
Peatland
Partnership