



# Fisheries Conservation in the Dart

Dr Dan Osmond –  
Westcountry Rivers Trust



[DanOsmond@wrt.org.uk](mailto:DanOsmond@wrt.org.uk)



# Background – What are we talking about?

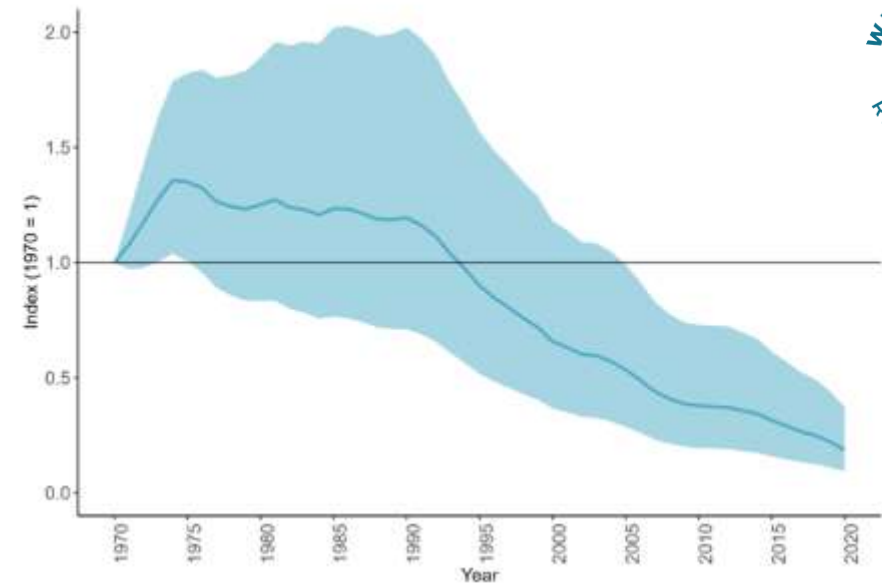


- Focus on migratory salmonids
- History and value in the Dart
- Current Status
- Important Stressors
- Where do we go from here?



# Status of migratory salmonids

- Life in the Anthropocene.
- Freshwater Migratory Fishes fastest declining vertebrate group.
- 3 million adult Atlantic Salmon (*Salmo salar*) today. 70% decline from 1970's 9 million.
- Every principal salmon river in Southwest England 'At Risk' or 'Probably at Risk'.



Living Planet Report, Dietet et al., 2022.

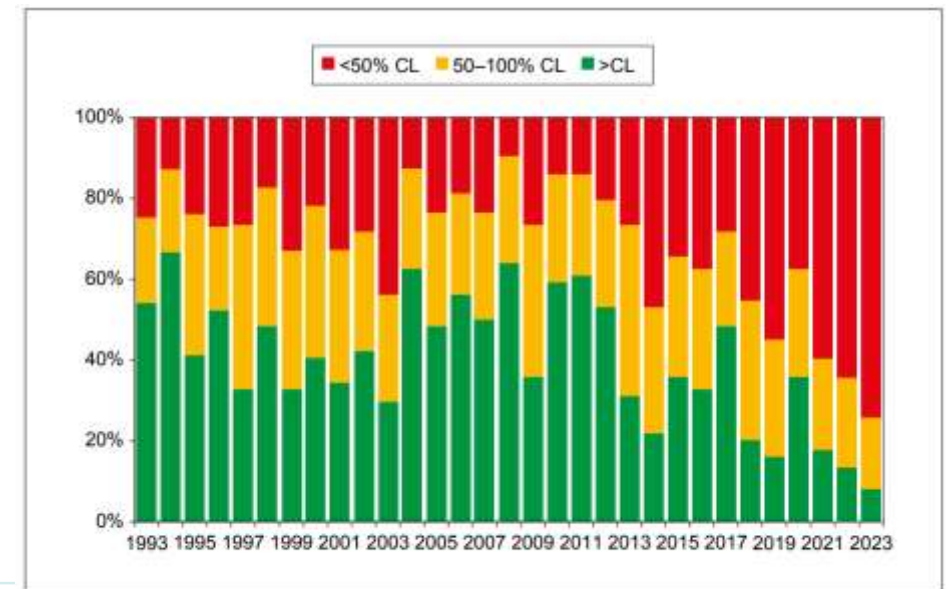
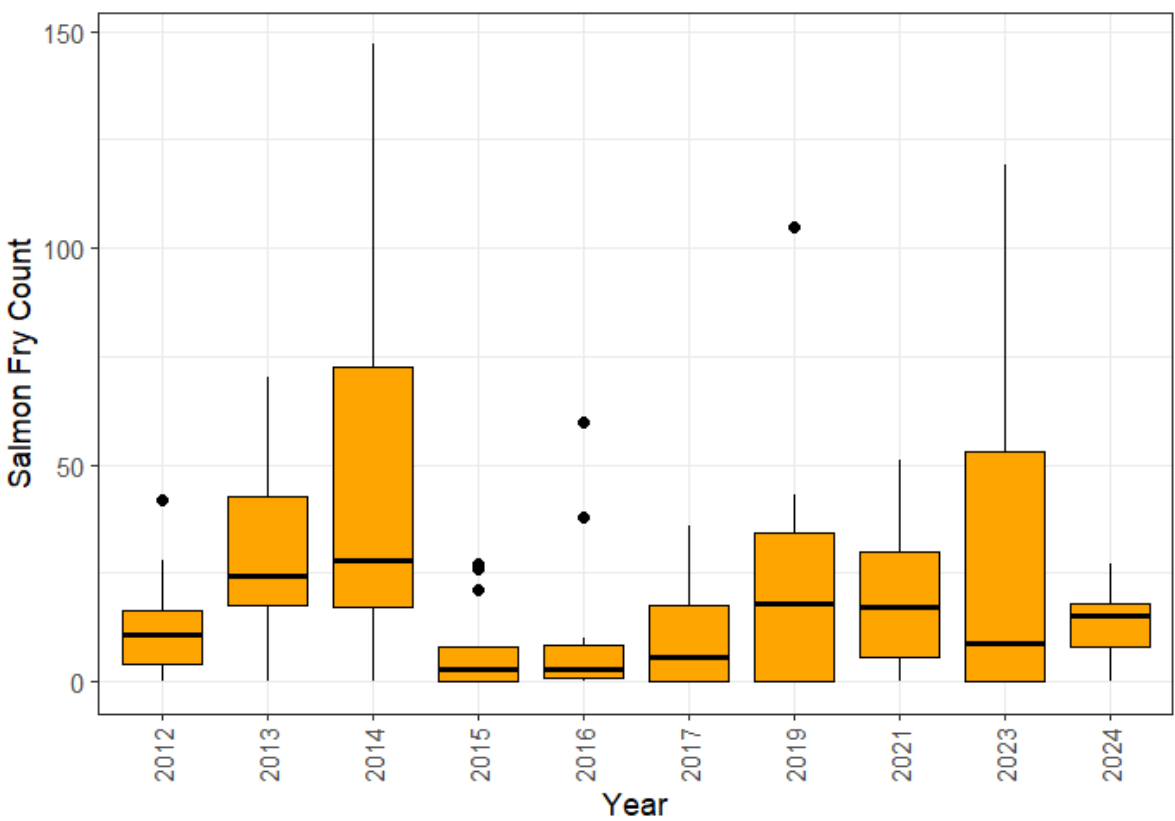
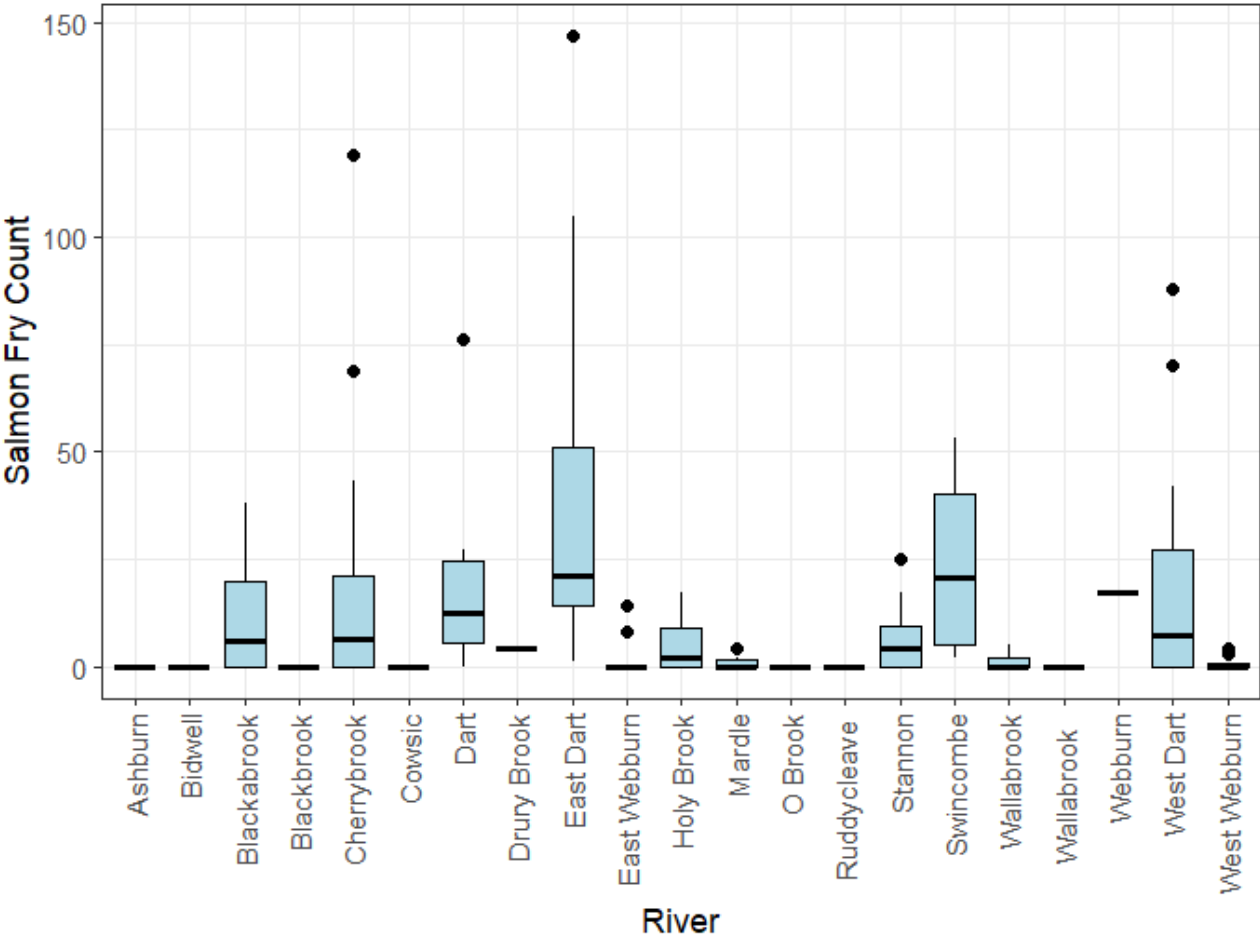


Figure 31. Percentage of salmon river stocks exceeding their Conservation Limit (CL), between 50% and 100% of the CL, and less than 50% of the CL, 1993-2023.

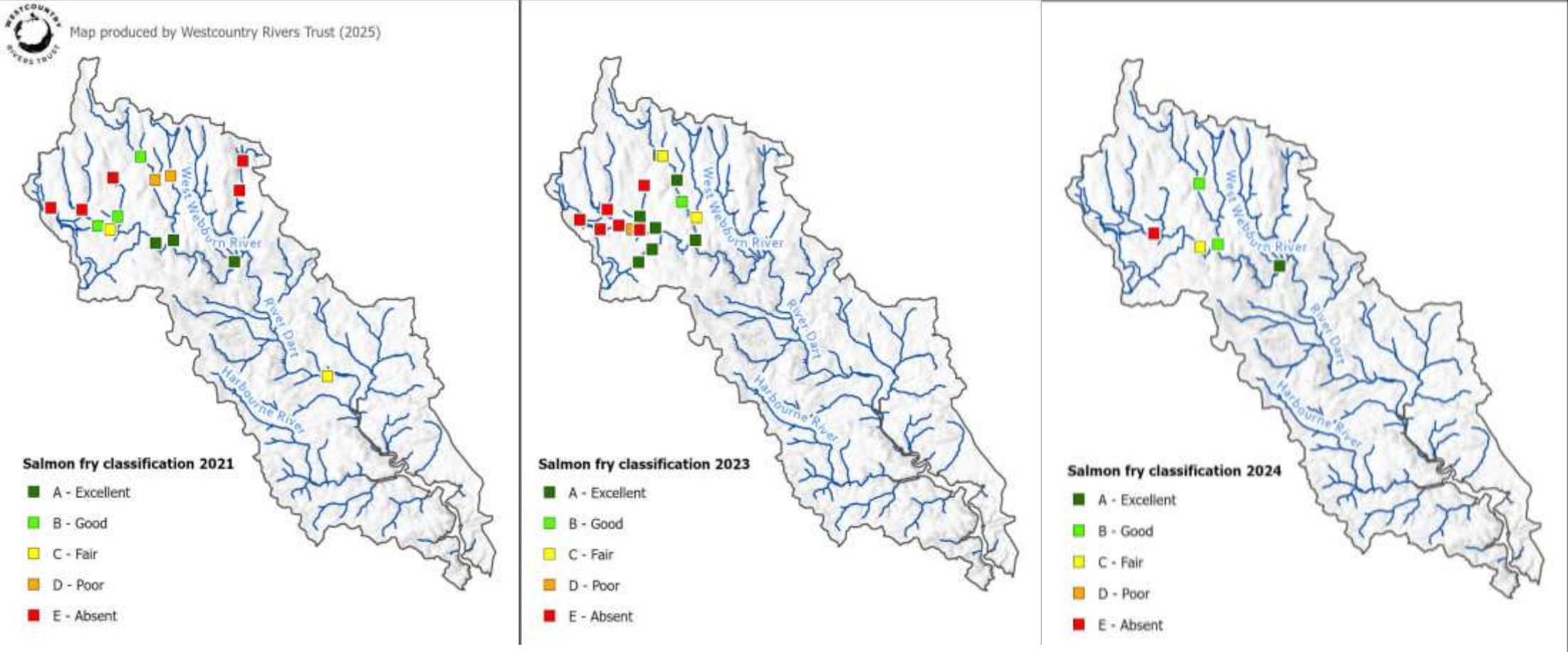
Environment Agency, 2023.



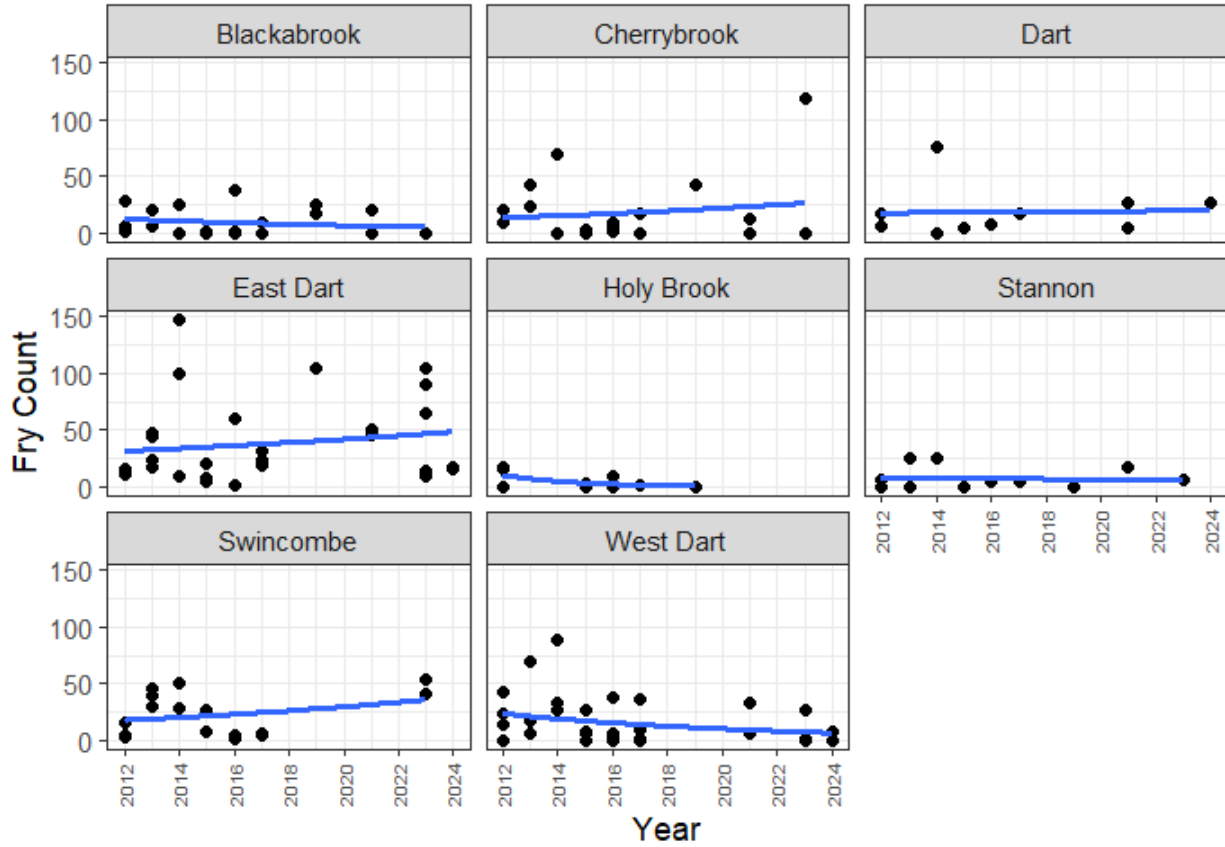
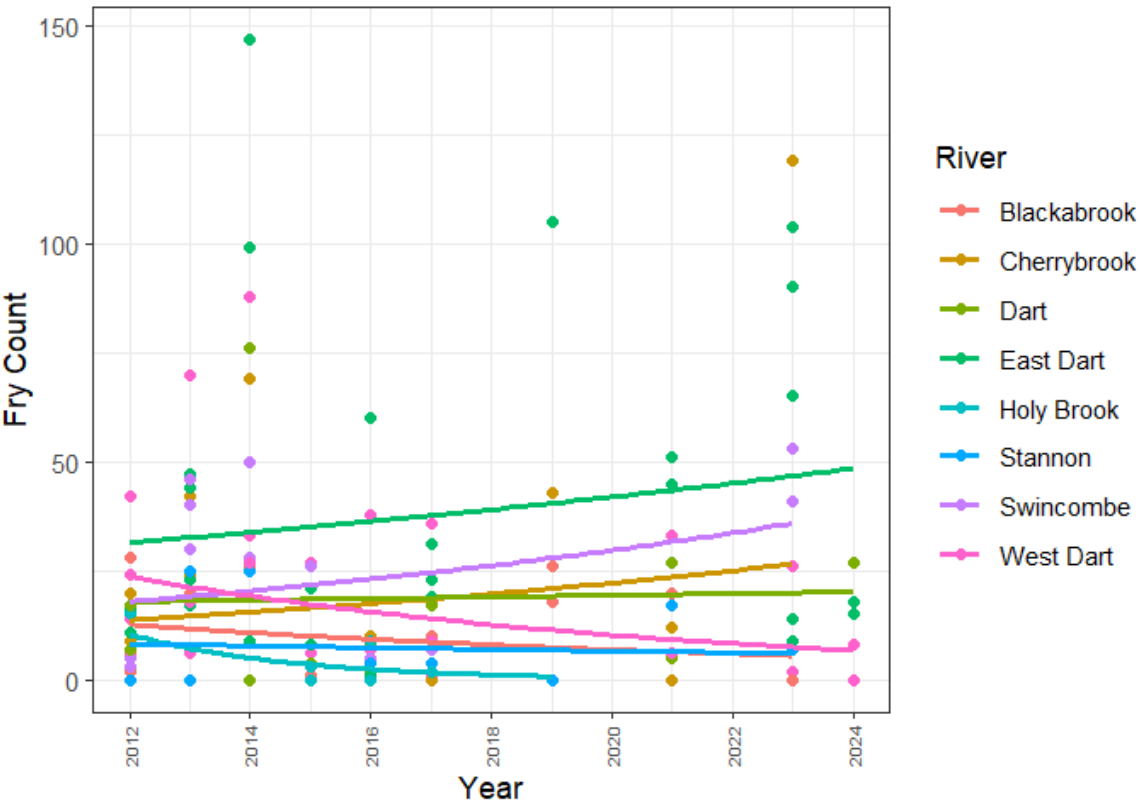
# Salmon in the Dart – what do we know?



# Salmon in the Dart – what do we know?



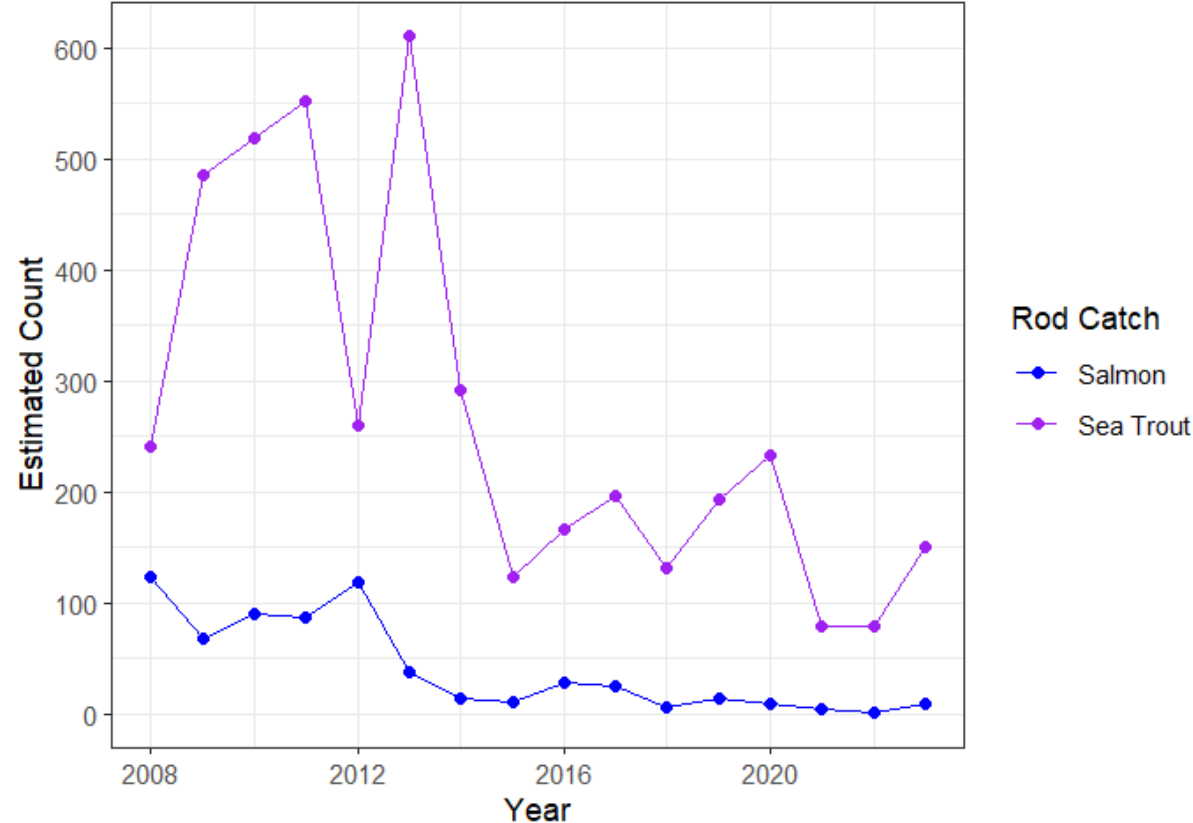
# Salmon in the Dart – what do we know?



# Salmon in the Dart – what do we know?

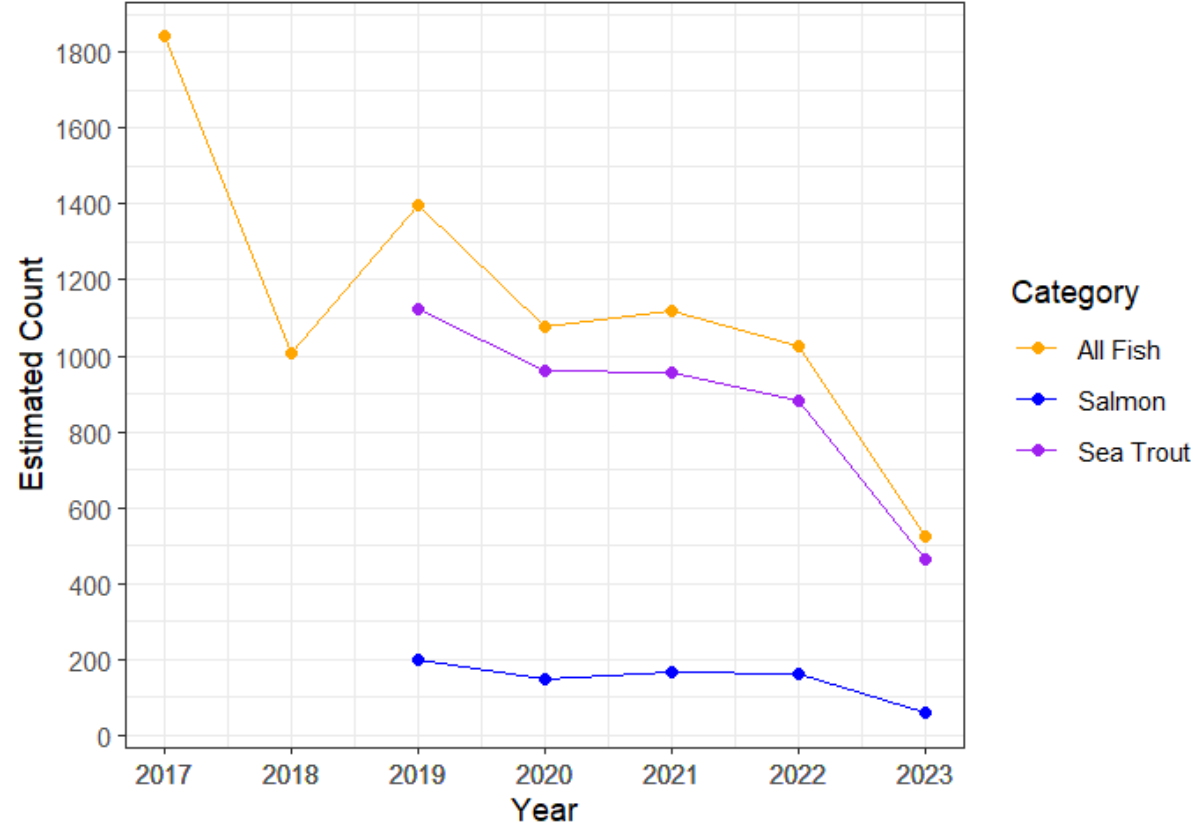


Rod Catch



Environment Agency, 2024.

Totnes Weir Fish Counter

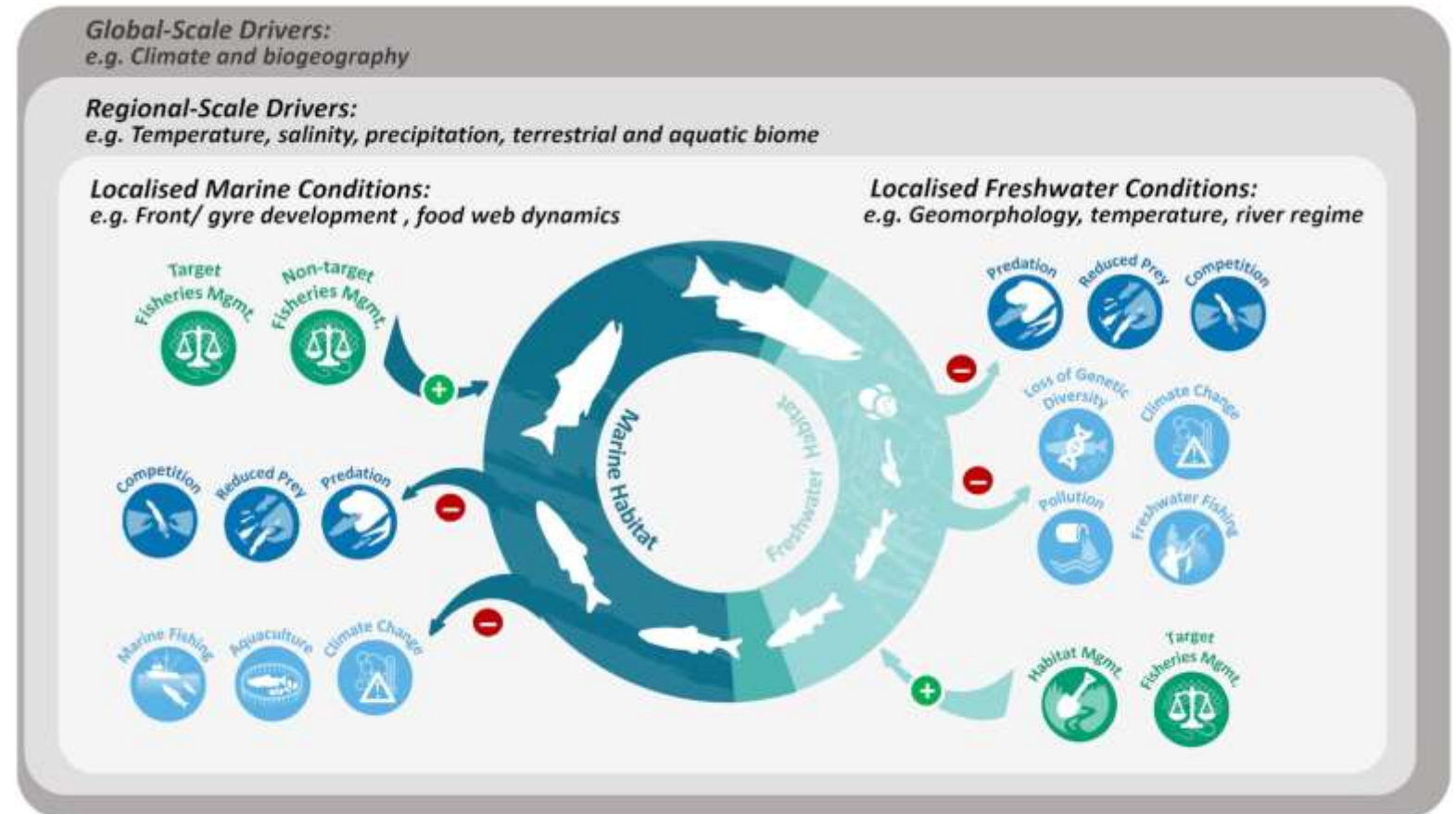


Fishtek, 2024.

# Likely Suspects

- Threats to salmon:

- Climate change
- Disease
- Salmon Stocking
- Invasive species
- Habitat degradation
- Predation
- Migration barriers
- Pollution
- Fisheries exploitation
- Salmon farming



Bull et al., 2022.

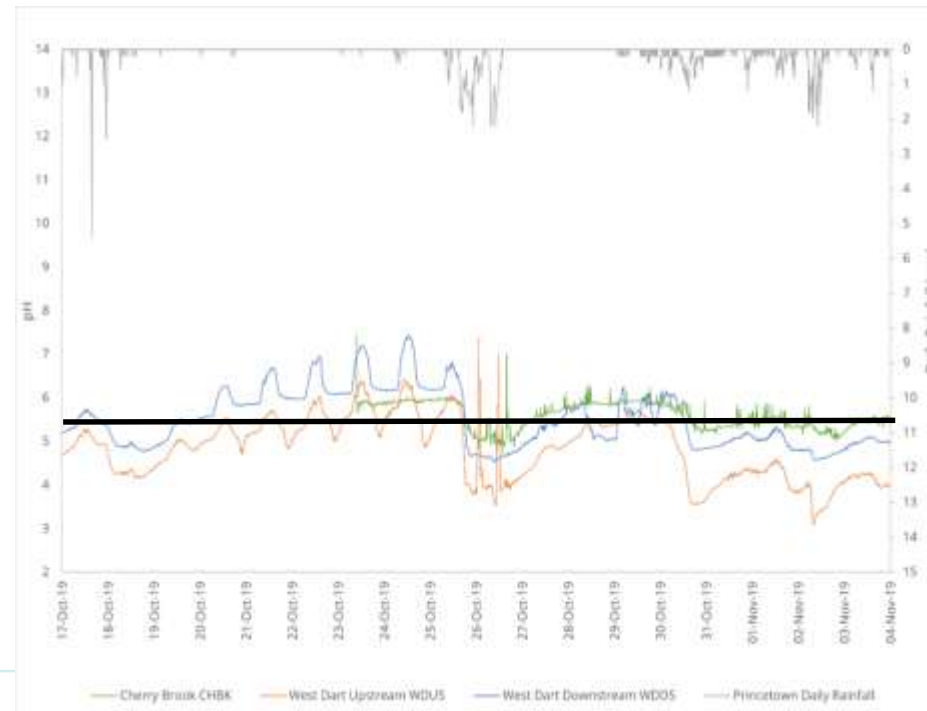


# Looking upstream...



## Liming Phase 2 Trial

- Carbonate sand (900kg) placed at side of Tinnars Stream, washes in under high river flow and/or rainfall
- Clear shift in pH upstream vs downstream
- Closer to pH 5.5 threshold



## Habitat Restoration

- Dutchy River Management Plan
- Targeted habitat improvements

# Summary



**Salmon are not immune to challenges of Anthropocene.**



**Declines of salmon and sea trout have been particularly extreme in the Dart.**



**Further monitoring required to understand drivers of declines.**



**Addressing stressors and habitat restoration can support fisheries.**



# Contact



[DanOsmond@wrt.org.uk](mailto:DanOsmond@wrt.org.uk)



[wrt.org.uk](http://wrt.org.uk)

